



ring
Stick Up Cam

Setup and
Installation Guide

Step 1

Download the Ring app



The Ring app will walk you through setting up and managing your Stick Up Cam.

The Ring app is available for iPhone, iPad, Mac Desktop, Android and Windows 10.



Search for "Ring" in one of the app stores above, or visit: ring.com/app

We have an online guide with videos and tutorials at: ring.com/setup

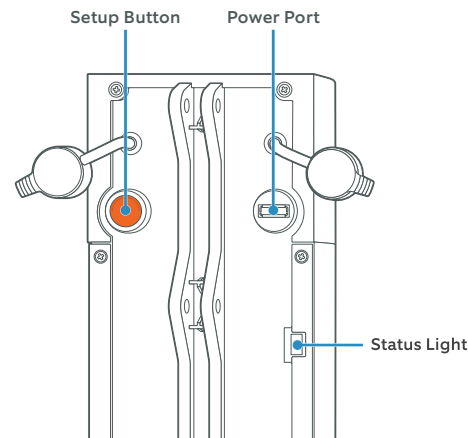
Step 2

Meet the back of your Stick Up Cam

Setup Button – You'll be instructed to push this during the in-app setup.

Power Port – Plug the orange cable into this port to charge your Stick Up Cam. If running off battery, make sure it's fully charged before installation.

Status Light – This light will pulse when your Stick Up Cam is in setup mode.

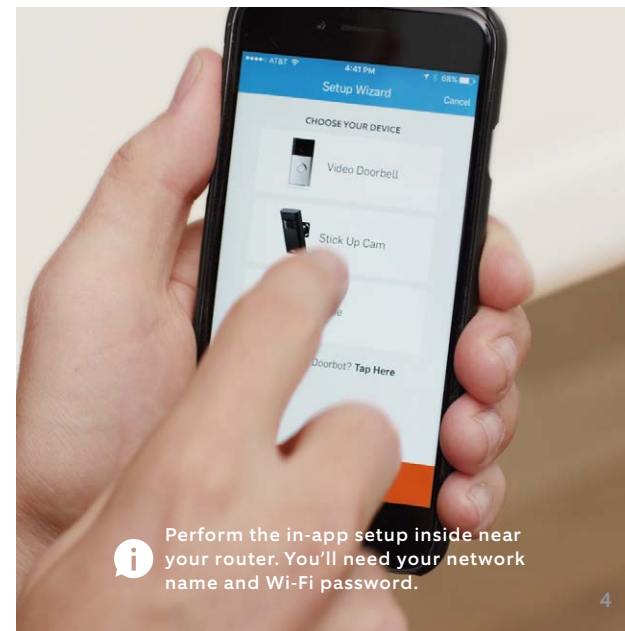


Step 3

Perform the in-app setup

Select the plus sign in the Ring app to set up a new device.

When prompted, select **Stick Up Cam**.



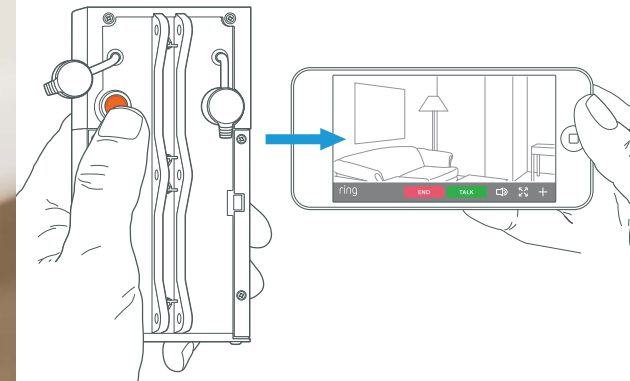
Perform the in-app setup inside near your router. You'll need your network name and Wi-Fi password.

Step 4

Test the video quality

Before mounting your Stick Up Cam, let's run a quick test. Double-press the orange button. This will send an alert to your mobile device.

Smile, you're on camera.



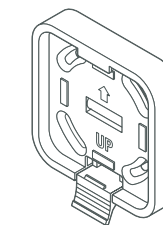
Repeat this test outside. If video quality is not as good, you may need to invest in a Wi-Fi extender. Learn more at: ring.com/extender

Step 5

Select the mount you'd like to use

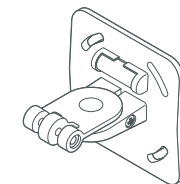
You have two mounts to choose from.

There's the **Quick Release Mount** and the **Security Mount**.



Quick Release Mount

This mount makes it easy to take your Stick Up Cam off the wall for charging.



Security Mount

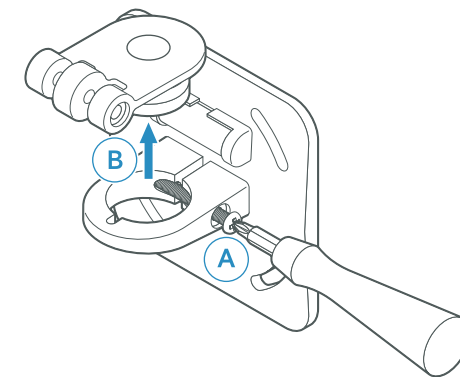
This mount offers a more permanent solution.

Step 6

Remove the swivel arm from the security mount

A) Loosen the bolt on the side.

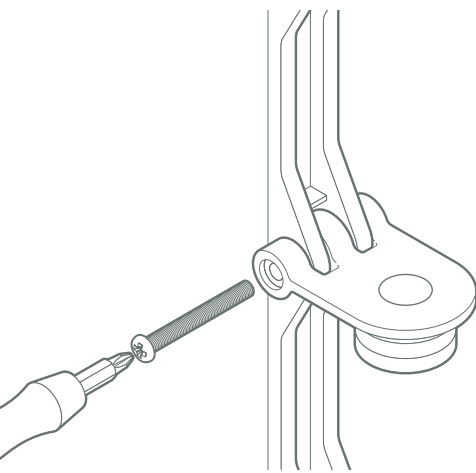
B) Remove the bolt completely to set the swivel arm free, and set this screw aside for now.



Step 7

Attach the swivel arm to your Stick Up Cam

Use the provided bolt to attach the swivel arm to any of the three mounting points on the back of your Stick Up Cam.



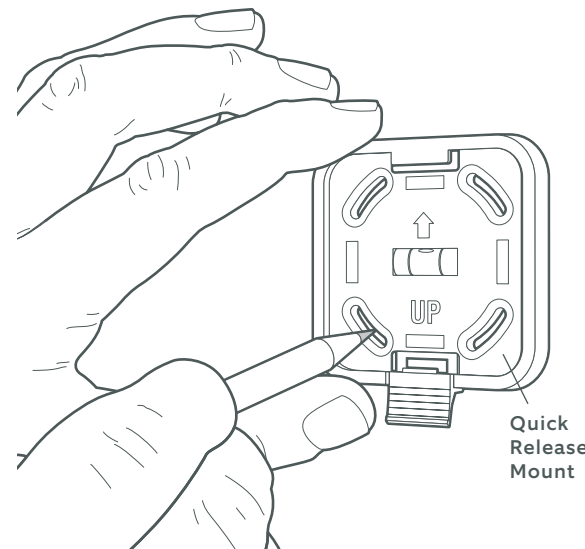
i Screw the bolt into the side of the swivel arm that has a recess.

Step 8

Install the mount

Take everything to the location where you're installing your Stick Up Cam.

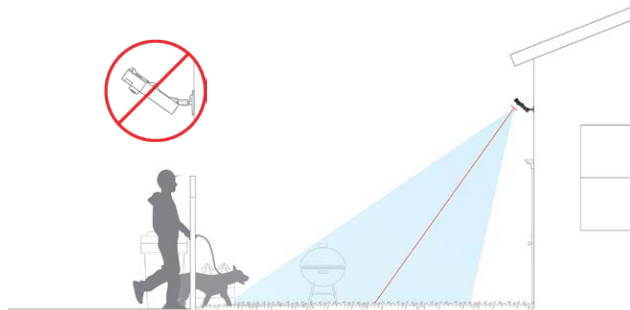
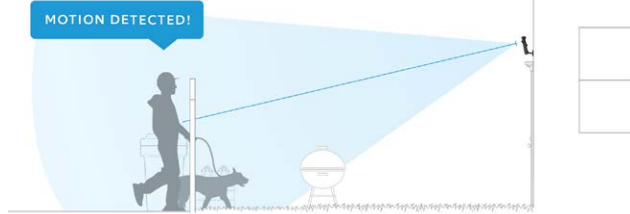
If you're installing on **stucco, brick or concrete**, use the quick release mount as a template to mark the location of 4 holes that you'll drill in the next step.



Quick Release Mount

8

When selecting your mounting location, factor in the area you want to cover. Mount your Stick Up Cam lower, and aim it outwards to cover a longer distance.

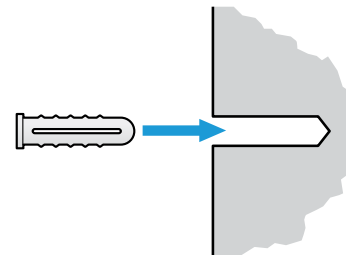


9

10

On **stucco, brick or concrete**, use the provided drill bit to drill the 4 holes that you marked in the previous step.

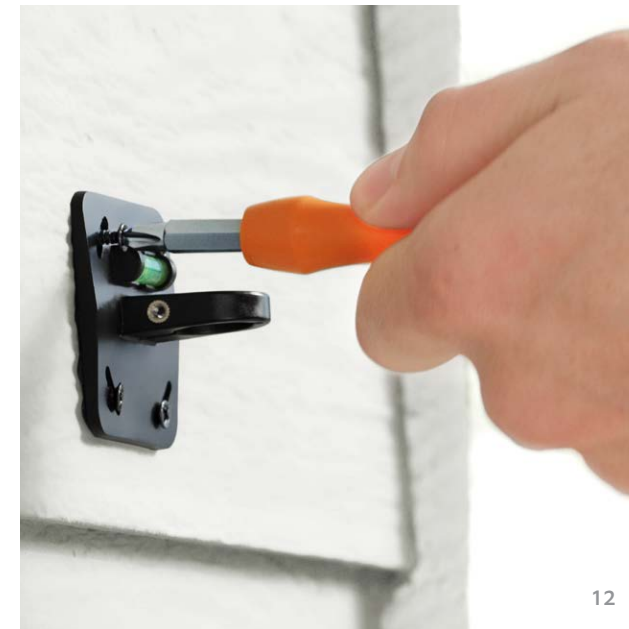
Then insert the wall anchors.



On **wood or siding**, skip this part, and screw the bracket directly onto your wall.

11

Use the Phillips head side of the Ring screwdriver and the provided screws to screw in the mount you selected in **Step 5**.

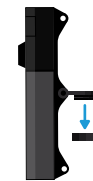


12

Step 9

Attach your Stick Up Cam to the security mount

Use the bolt you set aside in **Step 6** to attach the camera to the security mount.

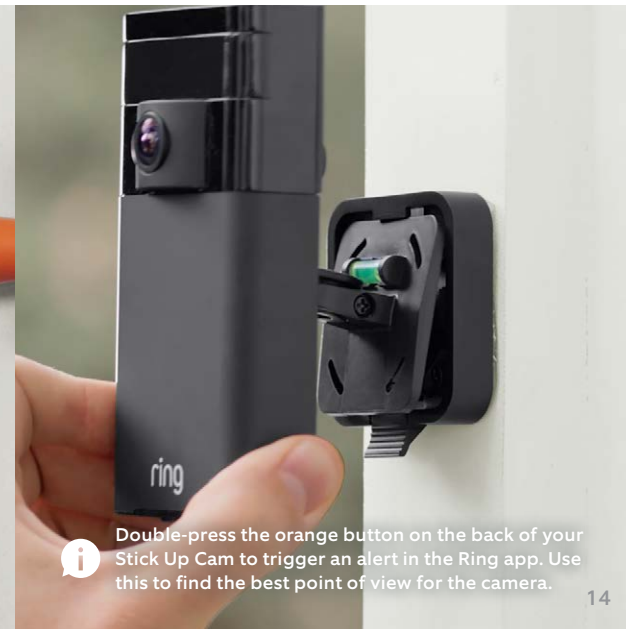


13

Step 10 (if using the quick release mount)

Snap your Stick Up Cam into the quick release mount

Push gently down on the tab, and snap your Stick Up Cam into place.



i Double-press the orange button on the back of your Stick Up Cam to trigger an alert in the Ring app. Use this to find the best point of view for the camera.

14