

ring



Chime Pro



Say “Hello” to your Chime Pro

Chime Pro instantly sounds customizable audio alerts when your Ring devices capture activity.



It's also a Wi-Fi extender, so it extends the range of your network and improves the Wi-Fi signal to your Ring devices.

Plug in Chime Pro

Find a location somewhere between your Wi-Fi router, and any other Ring devices you plan to connect to your Chime Pro.



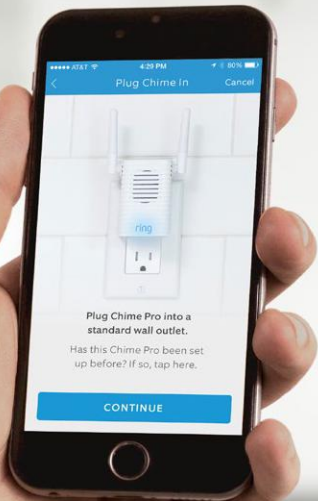
When the Ring logo on the front of your Chime Pro is slowly flashing blue, it is ready to be set up.

Perform the in-app setup

In the Ring app, select **Add Device**.

Then select **Chime Pro**, and follow the in-app instructions.

Chime Pro can only connect to 2.4GHz networks.

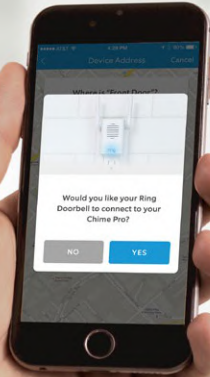


Customize alert preferences for your Chime Pro

Following setup, select the Ring devices you would like your Chime Pro to sound audio alerts from.



Connect other Ring Devices to your Chime Pro



For existing Ring devices, select your Chime Pro in the Ring app, then select Linked Devices.

If you're setting up a new Ring device, and you're asked if you would like it to connect to Chime Pro, select YES.

Enjoy your Chime Pro

The Ring logo on the front of Chime Pro uses light patterns to communicate messages.

Fast Pulse
Scanning for Wi-Fi

Slow Pulse
In setup mode

Solid
Online



For additional help, visit:
ring.com/help

Or give us a call...

US 1 800 656 1918

UK 01727 263045

AU 1 300 205 983

NZ +64 9 887 9871

Mexico (D.F) 52 55 8526 5445

Worldwide +1 310 929 7085

For a list of all our customer support numbers, visit: ring.com/callus

To review your warranty coverage, please visit www.ring.com/warranty.

Patents: www.ring.com/patents

© 2018 Ring LLC or its affiliates.

RING, ALWAYS HOME, and all related logos are trademarks of Ring LLC or its affiliates.

Last updated: 10/19/18